



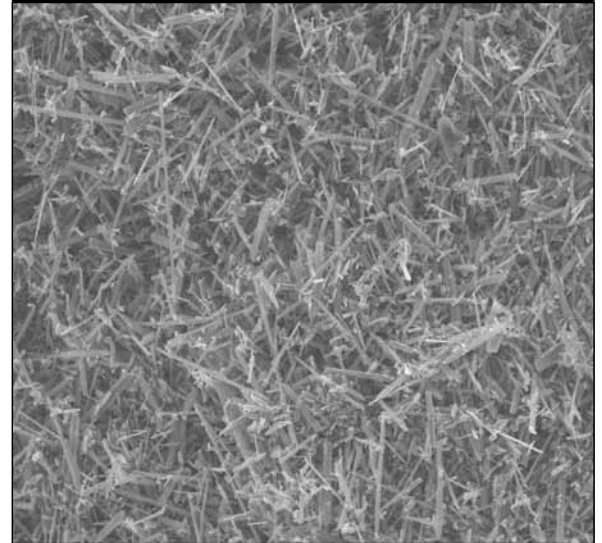
Brand of the S&B Group

Wollastonite

ASPECT® 3000

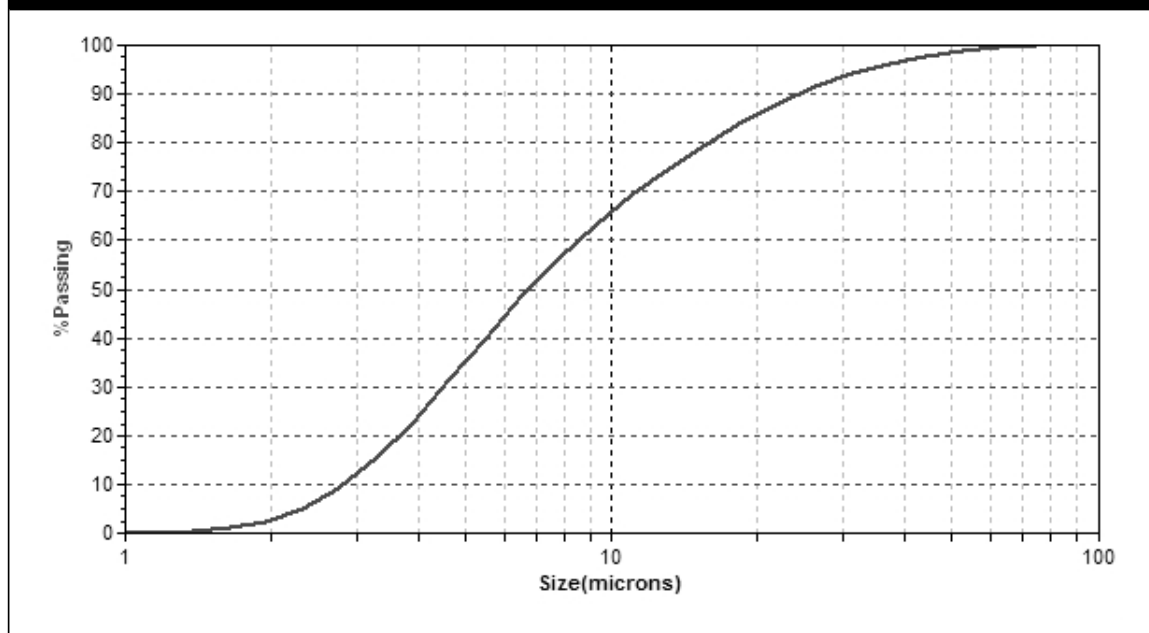
TYPICAL PROPERTY	TYPICAL VALUE
G.E. BRIGHTNESS	87
OIL ABSORPTION (lbs./100 lbs.)	45
BULK DENSITY LOOSE (lbs./cu.ft.) (g/cc)	18 0.29
TAPPED (lbs./cu.ft.) (g/cc)	28 0.45
MEDIAN PARTICLE SIZE (μm) (MICROTRAC)	7
SURFACE AREA (m^2/g) (BET)	2.2
MINUS 325 U.S. MESH SCREEN (%)	99.9
MOISTURE (%)	0.10

(x250)



Typical values for bulk density will change with chemical modification.

PARTICLE SIZE DISTRIBUTION CURVE



nyco[®]Brand of the **S&B** Group

Wollastonite

ASPECT[®] 3000

- State-of-the-art processing operations
- World-class chemical modification technology
- Industry leader
- World-wide distribution network
- Customer-focused global technical support
- Premium quality wollastonite

Wollastonite is a naturally occurring mineral, is non-hazardous, and is not regulated by shipping agencies. Based upon toxicological studies, there is no evidence of any significant health risks to workers

NORTH AMERICAN OPERATION

P.O. Box 368, 803 Mountain View Dr.
Willsboro, New York, 12996-0368 USA
Tel.: 518-963-4262
Fax: 518-963-1110

ISO 9001/14001 CERTIFIED**LATIN AMERICAN OPERATION**

Hermosillo, Sonora, Mexico
Tel.: 52-662-289-1000
Fax: 52-662-289-1090

ISO 9001/14001 CERTIFIED

**For any further information,
please contact:**

info@nycominerals.com

This data contains general information and describes typical properties only. It is offered for use by persons qualified to determine for themselves the suitability of our products for particular purposes. No guarantee is made or liability assumed, the application of this data and the products described herein being at the sole risk of the user.

TYPICAL PROPERTIES	VALUE
APPEARANCE	WHITE
MORPHOLOGY	ACICULAR
MOLECULAR WEIGHT	116
SPECIFIC GRAVITY	2.9
REFRACTIVE INDEX	1.63
pH (10% SLURRY)	9.9
WATER SOLUBILITY (g/100cc)	0.0095
DENSITY (lbs./cu.ft.)	181
BULKING VALUE (gal./lbs.)	0.0413
MOHS HARDNESS	4.5
COEFFICIENT OF EXPANSION (mm/mm/°C)	6.5 X 10 ⁻⁶
MELTING POINT (°C) - theoretical	1540
MELTING POINT (°C) -by ASTM D1857	1410

CHEMICAL COMPOSITION: CaSiO₃

COMPONENT	TYPICAL VALUE (%)
CaO	45.72
SiO ₂	46.52
Fe ₂ O ₃	0.25
Al ₂ O ₃	0.25
MnO	0.02
MgO	0.71
TiO ₂	0.05
K ₂ O	0.20
Wt. Loss (1000°C)	6.30