

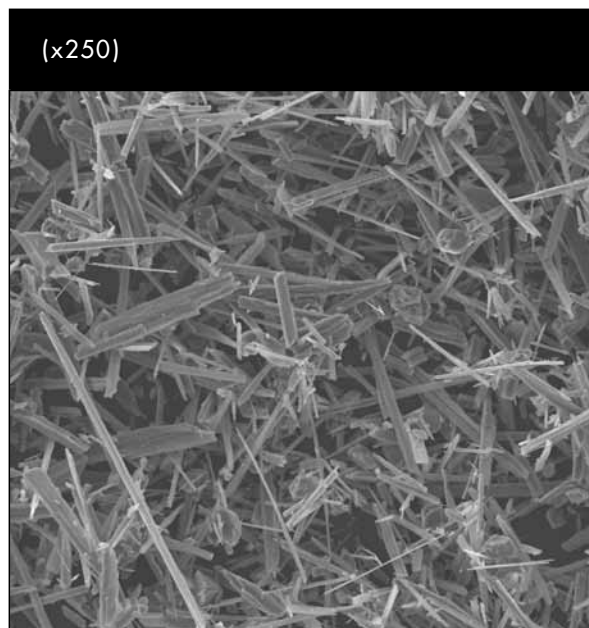


Brand of the S&B Group

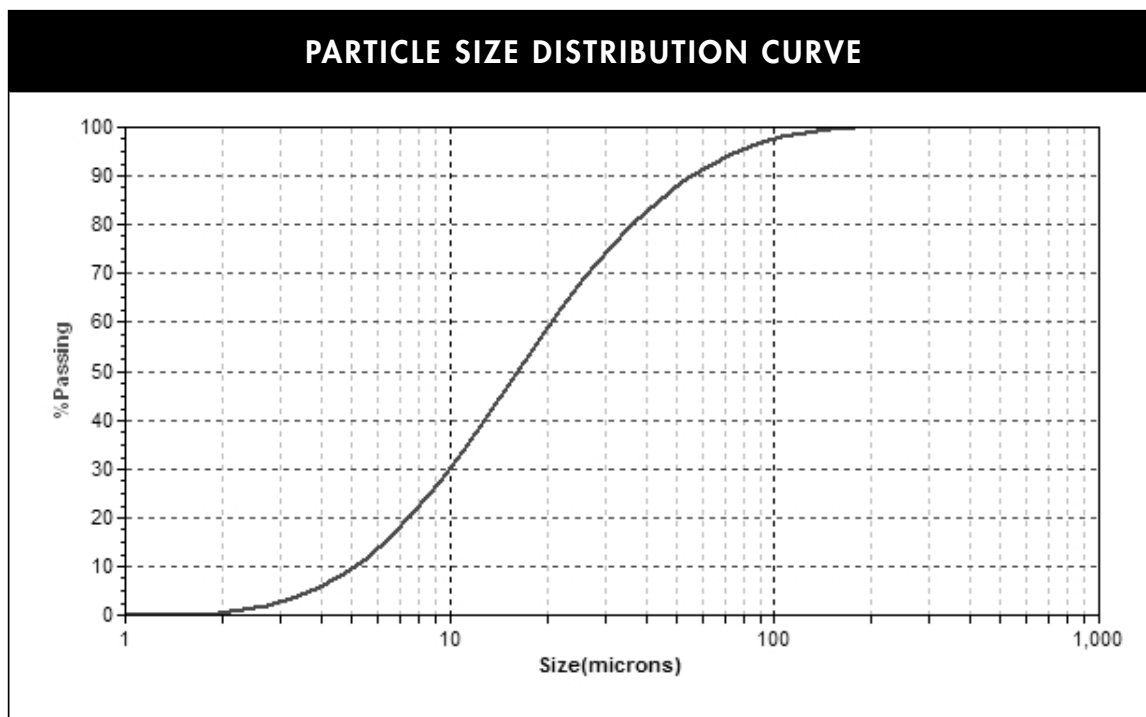
# Wollastonite

## ASPECT® 4000

TYPICAL PROPERTY	TYPICAL VALUE
G.E. BRIGHTNESS	82
OIL ABSORPTION (lbs./100 lbs.)	35
BULK DENSITY	
LOOSE (lbs./cu.ft.)	25
(g/cc)	0.40
TAPPED (lbs./cu.ft.)	44
(g/cc)	0.70
MEDIAN PARTICLE SIZE (µm) (MICROTRAC)	16
SURFACE AREA (m <sup>2</sup> /g) (BET)	1.1
MINUS 325 U.S. MESH SCREEN (%)	99.0
MOISTURE (%)	0.10



Typical values for bulk density will change with chemical modification.



**nyco**<sup>®</sup>Brand of the **S&B** Group

# Wollastonite

## ASPECT<sup>®</sup> 4000

- State-of-the-art processing operations
- World-class chemical modification technology
- Industry leader
- World-wide distribution network
- Customer-focused global technical support
- Premium quality wollastonite

Wollastonite is a naturally occurring mineral, is non-hazardous, and is not regulated by shipping agencies. Based upon toxicological studies, there is no evidence of any significant health risks to workers

**NORTH AMERICAN OPERATION**

P.O. Box 368, 803 Mountain View Dr.  
Willsboro, New York, 12996-0368 USA  
Tel.: 518-963-4262  
Fax: 518-963-1110

**ISO 9001/14001 CERTIFIED****LATIN AMERICAN OPERATION**

Hermosillo, Sonora, Mexico  
Tel.: 52-662-289-1000  
Fax: 52-662-289-1090

**ISO 9001/14001 CERTIFIED**

**For any further information,  
please contact:**

[info@nycominerals.com](mailto:info@nycominerals.com)

This data contains general information and describes typical properties only. It is offered for use by persons qualified to determine for themselves the suitability of our products for particular purposes. No guarantee is made or liability assumed, the application of this data and the products described herein being at the sole risk of the user.

TYPICAL PROPERTIES	VALUE
APPEARANCE	WHITE
MORPHOLOGY	ACICULAR
MOLECULAR WEIGHT	116
SPECIFIC GRAVITY	2.9
REFRACTIVE INDEX	1.63
pH (10% SLURRY)	9.9
WATER SOLUBILITY (g/100cc)	0.0095
DENSITY (lbs./cu.ft.)	181
BULKING VALUE (gal./lbs.)	0.0413
MOHS HARDNESS	4.5
COEFFICIENT OF EXPANSION (mm/mm/°C)	6.5 X 10 <sup>-6</sup>
MELTING POINT (°C) - theoretical	1540
MELTING POINT (°C) -by ASTM D1857	1410

**CHEMICAL COMPOSITION: CaSiO<sub>3</sub>**

COMPONENT	TYPICAL VALUE (%)
CaO	45.72
SiO <sub>2</sub>	46.52
Fe <sub>2</sub> O <sub>3</sub>	0.25
Al <sub>2</sub> O <sub>3</sub>	0.25
MnO	0.02
MgO	0.71
TiO <sub>2</sub>	0.05
K <sub>2</sub> O	0.20
Wt. Loss (1000°C)	6.30